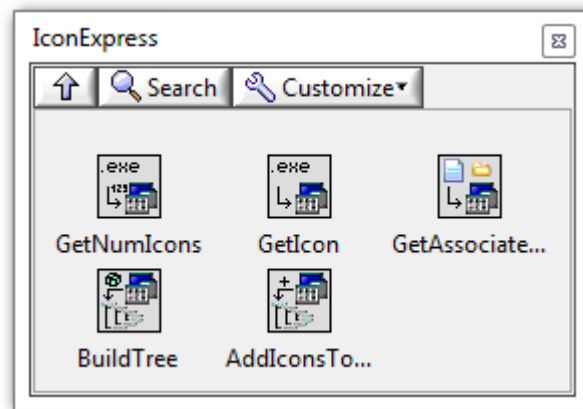
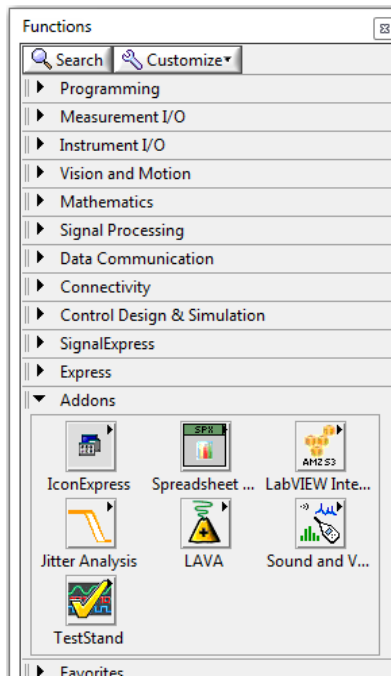


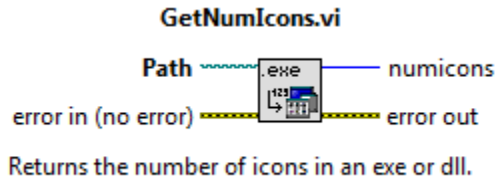
Icon Express

Documentation

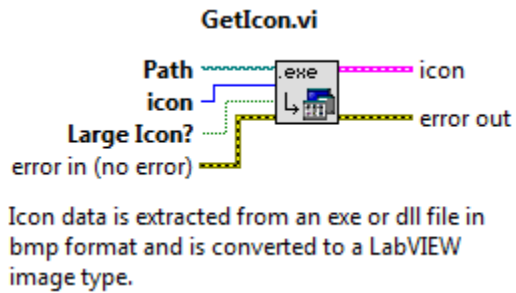
Icon Express installs its VIs on the Addons palette under the “IconExpress” sub-palette.



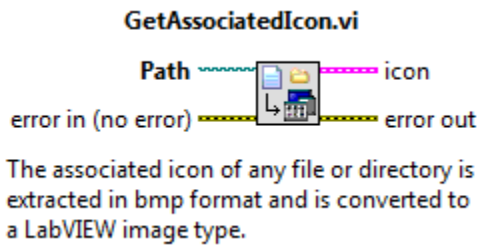
GetNumIcons: Returns the number of icons stored in an EXE or DLL file.



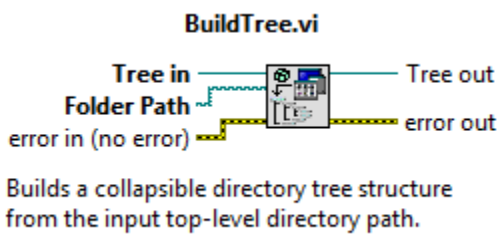
GetIcon: Indexes a particular icon stored in an EXE or DLL file and returns the image as a LabVIEW image type.



GetAssociatedIcon: For non-exe or dll files the associated icon can be extracted. For example, if you want to get the PDF icon for a PDF file, the path can be provided to a PDF file and this VI will request the associated exe icon from Windows.

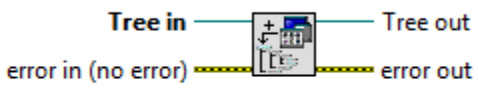


BuildTree: Builds a directory tree in a tree control starting from the specified folder.



AddIconsToTree: Adds the associated icon for each file in the directory tree to the tree control.

AddIconsToTree.vi



Adds the associated directory/file icons to the directory tree.